

Horsecastle Evangelical Church
Safeguarding Policy, Procedures,
and Codes of Conduct

September 2022

Contents

Section	Description	Page
	Safeguarding policy and procedures	3
1	Purpose	3
2	Scope	
3	Definitions	3
4	Values and beliefs	5
5	Our responsibilities and commitments	6
	Safeguarding Procedures	
6	Purpose	9
7	Scope	9
8	Governance and oversight	9
9	Recruitment and ongoing support of staff and volunteers	9
10	Ensuring a safe and healthy environment	12
11	Responding to and reporting safeguarding concerns and disclosures	14
12	Allegations or concerns about staff and volunteers	15
13	Management of ex-offenders or those who pose an actual or potential risk to others; particularly to vulnerable people	15
14	Concerns about practice	16
	Appendix A - Safeguarding statement	17
	Appendix B – Safeguarding responsibilities	18
	Appendix C – Standard documents	19
	Appendix D – Codes of conduct	29
	Flowchart – Reporting concerns or disclosures	32
	Flowchart – Processing concerns or disclosures the role of the DSL	33
	Safeguarding poster	34

Safeguarding Policy and Procedures

1. Purpose

This policy with its procedures and appendices outlines how we will seek to:

- 1.1. Ensure that we provide a healthy and spiritually nurturing, environment for everyone who engages with our church community
- 1.2. Ensure that every member of our church community is protected from harm, including harassment, abuse, and exploitation
- 1.3. Ensure that that any harm that is identified, regardless of where it occurred is handled effectively, promptly, and proportionately
- 1.4. Ensure that when supporting people who have experienced harm:
 - 1.4.1. We treat with dignity, respect, and compassion
 - 1.4.2. That their views and wishes are given full consideration
 - 1.4.3. That we act in their best interest
 - 1.4.4. That we ensure they are appropriately involved in and informed of decisions that affect them
- 1.5. Ensure that where concerns or support needs that fall below the threshold for reporting to statutory services are identified, responses that are appropriate, proportionate, and consent-based are made
- 1.6. Ensure that appropriate, confidential safeguarding records, that allow us to fulfil our duty of care to protect and promote the wellbeing of those to whom we minister, are securely kept, and disposed of in line with our legal duties and best practice under both safeguarding and data-protection legislation and guidance (details of our data storage and disposal procedures can be found at in our GDPR policy)
- 1.7. Ensure that our trustees, staff, and volunteers are clear about their responsibilities and duties and are supported to fulfil them competently and confidently
- 1.8. Support the development of an open and transparent culture that listens to the views and wishes of every member of our church community and encourages and supports the raising of concerns, complaints, and allegations
- 1.9. Provide leadership and accountability for every member of our church community, including our most senior leaders in relation to safeguarding
- 1.10. Ensure that all our ministry, is provided in a manner that is consistent with our biblical beliefs, and that were challenge, or even formal church discipline are required, that Christian love, grace and mercy, gentleness and kindness characterise our interactions
- 1.11. Ensure that our leaders model biblical and Christlike servant leadership, valuing, caring for and nurturing those that God brings under their authority with meekness and humility, as those who will give an account in the final judgement
- 1.12. Ensure that all church members have a basic understanding of safeguarding and that they understand their responsibility to raise and challenge any abusive behaviours

2. Scope

- 2.1. This policy applies in particular to staff or volunteers who work on our behalf with vulnerable people (children, young people, their parents / carers, adults at risk of abuse or adults with care and support needs) and to those who have leadership and oversight of the church's activities. This includes trustees, senior leaders, group / ministry leaders, paid staff, volunteers, or others working on our behalf
- 2.2. The policy also outlines the general responsibilities of every member of our church community to raise concerns about individuals or practice in the church with the appropriate officers.

3. Definitions

Additional needs: is a term most often applied to children who require support beyond what we would usually expect to provide to a child of that age or developments stage.

Adult: a person who is at least 18 years of age

Adult at risk of abuse / in need of protection: refers to adults who have care and support needs, are at risk of abuse, and due to their support needs are unable to protect themselves from the abuse.

Adult with care and / or support needs: refers to an adult who requires help with day-to-day tasks that most people would be able to perform for themselves.

Child: A child is a person who has not yet attained their 18th birthday which aligns with the United Nations Convention of the Rights of the Child. In Scotland, the position is slightly more complex as Scottish law also recognises an age of “Legal Capacity” which is 1. Unborn children are included within the scope of Child Protection.

Child in Need: Similar to targeted safeguarding, this refers to care and support that is offered to a child or family with more complex needs such that if effective support is not provided, the child is unlikely to achieve or maintain a satisfactory level of health, development, or wellbeing.

Child Protection: refers to safeguarding activity that has met the statutory threshold for referral to the Police or Social Care and involves the prevention of, or response to “significant harm”.

Deacon(s): refers to those appointed by the church to that office to support the Elders and serve the church in practical and legal matters.

Elder(s): refers to those appointed by the church to that office to provide spiritual leadership and instruction. The Elders have the spiritual authority within the church.

Officers: refers to all those who hold formal office in the church including Deacons and Elders, and Trustees.

Regulated activity: refers to activity that a barred person must not do. In simple terms, it is activity that requires a DBS check.

Safeguarding arrangements: is used in this policy, procedures and related documents as a generic term that includes all aspects of the church’s approach to safeguarding, including matters related to policy, process, culture, and practice

Single Central Record: is the master record of all pre-appointment checks and processes that were completed prior to appointment to a role.

Spectrum of safeguarding: is the whole range of safeguarding activities that includes universal safeguarding, consent-based care, and support (i.e., support that falls below the statutory threshold), and the statutory responsibility to protect children, young people, and adults at risk of abuse from significant harm.

Staff: refers to any paid employee or office holder.

Statutory threshold: the point at which the church has a duty to report a concern to report a matter to one of the statutory bodies such as the Police, Social Care, or the Charity Commission.

Sub-threshold (or consent based) safeguarding: matters or concerns which do not meet the criteria for referral to statutory authorities. These issues may still be serious and require a response from the church, however, internal processes will be followed.

Targeted Safeguarding: care or support that is offered to a child or their family on the basis of consent to prevent harm and promote wellbeing where there is a risk of poor outcomes from the individual if their support needs are not met.

Trustee(s) refers to those who are legally responsible for the governance and oversight of the charity.

Universal safeguarding: activity that is required to keep everyone safe. This includes those who have no additional needs and includes the interface with other aspects of safety such as Health and Safety and employer responsibilities.

Volunteer(s): refers to anyone who is appointed by the church to a role or who performs identified tasks on behalf of the church for which they receive no payment (other than out-of-pocket expenses that are appropriately authorised).

Vulnerable people: is a generic term that can be used to mean different things and so care is needed. In the context of this policy, the term is used in a generic sense to include anyone who has a support or care need or whose ability to protect themselves against abuse is limited. This includes children, young people, adults with support needs and adults at risk of abuse. It also includes those who, due to specific individual circumstances find themselves, either for a short time or over a more extended time, requiring additional care, support, or protection, but who would not otherwise be regarded as needing support.

4. Values and beliefs

We believe that:

- 4.1. Everyone who engages with our church community, including staff, volunteers, and beneficiaries, has the right to be protected from any form of bullying, harassment, exploitation, or abuse and we will seek to ensure that we provide a caring and nurturing environment that is open and transparent, and that promotes the raising of concerns with senior leaders
- 4.2. We have a particular responsibility to protect and promote the wellbeing of those who have care and support needs and those at risk of abuse including children, young people, and adults at risk of abuse; ensuring they are safe while in our care and that we respond appropriately to disclosures or indicators that they may be experiencing abuse or neglect while in our care or elsewhere
- 4.3. Every member of our church community has a responsibility to act to support the values and commitments outlined in this policy
- 4.4. Everyone who engages with our church community has the right to be treated with dignity and respect
- 4.5. Our approach to safeguarding is rooted in, and is a practical outworking and expression of, our biblically based values and supports and confirms our gospel witness

4.6. Our approach to safeguarding is shaped by our belief as Christians that:

- 4.6.1. God is holy, loving, merciful and just and he requires his people to live in accordance with his character; acting justly, loving mercy, and living humbly before our God who will ultimately judge all people for the deeds performed in this life
- 4.6.2. The church, as the body of Christ on earth should uphold truth and justice with grace, without fear or favour, prejudice, or privilege.
- 4.6.3. Those in authority within the church are accountable to and will be judged by the God who sees all things and judges impartially.
 - 4.6.3.1. Higher standards are expected of leaders, who will be judged more severely than those who do not teach
 - 4.6.3.2. Leaders are to follow the example of Christ, leading with sacrificial, servant-hearted humility

- 4.6.4. Sin in the church, should be identified, confronted, and dealt with through confession and repentance
 - 4.6.4.1. Where such sin involves criminal activity, it should be reported to the civil authorities who are appointed by God to uphold justice and order in society
- 4.6.5. The church is not a gathering of sinless and perfect people, but rather a community of grace where we seek to encourage one another to grow in faith and obedience to God
 - 4.6.5.1. We are called to encourage and challenge each other lovingly and to spur one another on to greater holiness and obedience to God in an attitude of humility, grace, and forgiveness
 - 4.6.5.2. Where necessary, the church may impose formal discipline on its members in accord with its governing documents and rules of church order.
- 4.6.6. We are to honour those that God has set in authority over us and to live as responsible and good citizens in the time and place that God has set us
- 4.6.7. Every human life, including that of the unborn, is valuable to God and each person bears his image
- 4.6.8. We live in a fallen and sinful world, where there are many risks and dangers and we must seek to protect everyone, but particularly the vulnerable in our midst from those dangers
- 4.6.9. God cares for the widow, the orphan, and the stranger; he calls us to protect and care for those who are vulnerable in our society and to oppose exploitation, oppression, abuse, and the inflicting of harm due to negligence
- 4.6.10. Jesus' example was one of valuing and caring about those with whom he came into contact; even when delivering difficult and challenging messages
- 4.6.11. We are to love those around us as God loves them and to seek to bring healing, restoration, and reconciliation to broken and damaged lives by the manifestation of the love of God through us
- 4.6.12. The church is a place of grace, forgiveness and transformation, justice, truth, and holiness
 - 4.6.12.1. The gospel offers forgiveness by grace, through faith, but does not negate justice or remove the temporal consequences of the sin that has been forgiven
- 4.6.13. In this present time, the kingdom of God on earth is a spiritual kingdom that resides in the lives of God's people, and it only be advanced by proclamation and the work of the Holy Spirit in convicting and convincing
 - 4.6.13.1. The kingdom of God cannot be advanced by coercion or force

5. Our responsibilities and commitments

5.1. Our responsibilities

- 5.1.1. To ensure that the protection of all members of our community, but particularly children, young people, and adults at risk of abuse, and the promotion of their welfare is of paramount importance to us and that best practice in safeguarding is embedded into the culture of our church
- 5.1.2. To treat each person as equal in the sight of God, showing no favour or partiality
- 5.1.3. To seek to minister to, and to encourage growth in obedience to God and his word with equity, transparency, and sensitivity, in accordance with our fundamental beliefs as laid out in our statement of faith, charitable aims and governing documents
- 5.1.4. To value, respect and listen to the wishes of every member of our community, including those who are vulnerable or find it difficult to make their voice heard
- 5.1.5. To ensure that as a church we are alert to the risks within society, including risks associated with grooming, online abuse, radicalisation, gender-based violence, exploitation, domestic abuse etc and to report appropriately
- 5.1.6. To work in partnership with children, young people, their parents / carers, adults at risk of abuse and local and national partner agencies and organisations as appropriate, to promote the welfare of, and to protect, each member of our community; particularly those who are more vulnerable
- 5.1.7. To work to develop and maintain an environment that is protective, caring and nurturing for all who engage with our community, in accordance with our doctrines and beliefs as outlined in our governing documents
- 5.1.8. To ensure that everyone who ministers or serves within the life of the church is suitable and competent to do so and that they understand the responsibilities of their role

5.2. How we will seek to fulfil these responsibilities

- 5.2.1. We aim to visibly demonstrate our commitment to safeguarding throughout the church and our most senior leaders will support the development of best practice and provide accountability to everyone who works (whether paid or voluntarily) on our behalf; including providing accountability and challenge to each other
- 5.2.2. We will ensure that those who are responsible for safeguarding at the various levels of the church are appropriately trained and supported to fulfil their role competently and confidently
- 5.2.3. We will actively seek to create and maintain a culture that is consistent with our biblical beliefs and best practice in safeguarding
- 5.2.4. We will ensure that we have robust and relevant policies, procedures and systems that support the culture of our organisation and the work of all those involved in safeguarding, and that these are reviewed for effectiveness annually
- 5.2.5. We will ensure that we appoint two Designated Safeguarding Leads one for children and one for adults and each will act as the Deputy for the other. They will take responsibility for leading the safeguarding of children and adults across the organisation
 - 5.2.5.1. Safeguarding will be promoted and overseen by our senior leaders
 - 5.2.5.2. Delegation of tasks and responsibilities will be clearly outlined in the relevant role descriptions and the organisation's safeguarding structures, complete with contact details, and made publicly available
- 5.2.6. We will adopt proportionate safer recruitment best practice in the recruitment and selection of staff and volunteers
- 5.2.7. We will provide effective leadership, management, and support to the staff and volunteers who deliver services on our behalf including:
 - 5.2.7.1. Ongoing training and skills development
 - 5.2.7.2. Supervision and pastoral support
 - 5.2.7.3. Quality and performance management measures
- 5.2.8. We will ensure that we consider safety in all areas of our work and ministry:
 - 5.2.8.1. Developing a positive culture
 - 5.2.8.2. Managing health and safety through effective policies and procedures; using risk assessment processes and proportionate systems
 - 5.2.8.3. Creating a positive and nurturing environment in all aspects of the community, including physical, social, emotional, psychological, spiritual etc environments
 - 5.2.8.4. Considering the online as well as the physical environments; including our use of social media and technology
- 5.2.9. We will ensure that we monitor the conduct of our staff and that we have policies, procedures, and systems for managing allegations against staff or volunteers, supported by a culture of listening to allegations and responding with rigor, fairness, and transparency
- 5.2.10. We will ensure that our expectations in relation to the conduct of members of our community are clear through codes of conduct, policies and procedures including:
 - 5.2.10.1. Anti-bullying and zero-tolerance approach to bullying; including cyber-bullying and the bullying of volunteers, staff, and leaders
 - 5.2.10.2. Dealing with peer-abuse (including child on child and domestic abuse) and harassment (including sexual harassment)
 - 5.2.10.3. Clear accountability processes and sanctions for infringements of the codes of conduct
 - 5.2.10.4. Equality and diversity and a culture of zero-tolerance of discriminatory or abusive attitudes, language, or behaviours
- 5.2.11. We will seek to clearly identify concerns about the safety or wellbeing of those who are part of our community and to respond appropriately and proportionately:
 - 5.2.11.1. To signpost or refer them to local or national services that can help them
 - 5.2.11.2. To provide information, guidance, and support as we are able

- 5.2.11.3. To share information appropriately with partner agencies where we have concerns about the safety of an individual and statutory thresholds and / or criteria are met
- 5.2.12. We will record and store information accurately, keeping it securely in line with our legal duties, information sharing policies and national and local guidance and agreements. This will include records such as:
 - 5.2.12.1. Consent forms
 - 5.2.12.2. Attendance data for work with children, young people, and Adults at Risk of Abuse
 - 5.2.12.3. Accident and incident reporting
 - 5.2.12.4. Confidential recording of safeguarding concerns
 - 5.2.12.5. First Aid records
- 5.2.13. We will involve children, young people, their parents or carers and adults at risk of abuse in our safeguarding processes wherever possible; making reasonable adjustments where necessary to enable them to participate in the decisions that affect them
- 5.2.14. We will ensure that we have a culture for raising concerns or complaints by any member of our community including children, young people, adults at risk of abuse and their parents / carers and for dealing with those concerns in an efficient, open, honest, and fair manner, including clear appeals processes
 - 5.2.14.1. We will also ensure that our leaders are competent and confident in handling complaints, concerns, and allegations
- 5.2.15. We will develop a culture that encourages every member of our community to identify and raise concerns
- 5.2.16. We will ensure that relevant policies, procedures, codes of conduct etc are publicly available

Safeguarding Procedures

6. Purpose

These procedures aim to provide staff and volunteers with clear and simple instructions as to how safeguarding is promoted and how concerns should be handled. They are not provided for training purposes and will not be used as a substitute for training.

7. Scope

These procedures apply to all staff and volunteers and others who act on behalf of the church.

8. Governance and oversight

The Trustees will provide effective oversight of safeguarding across the church by:

- 8.1. Ensuring that they appoint from amongst their number a Designated Safeguarding Lead for Children and a Designated Safeguarding Lead for Vulnerable adults (each acting as a deputy for each other) who will act on their behalf to provide leadership and guidance on matters related to safeguarding
- 8.2. Ensuring that the church leadership promote the importance of safeguarding and lead the development of a culture that is biblically faithful, healthy, transparent, and accountable and that safeguarding is appropriately prioritised, and its profile maintained
- 8.3. Ensuring that a suitably knowledgeable and appropriately trained and skilled Designated safeguarding Leads (DSL) are appointed and that they are adequately supported and resourced
- 8.4. Ensuring that a proportionate and legally compliant safeguarding policy is implemented and that it is reviewed by the DSLs at least annually, but more frequently as required
- 8.5. Ensuring that clearly defined safeguarding procedures and systems are in place, that they are understood and implemented by all staff, volunteers, and anyone else who acts on our behalf
- 8.6. Ensuring that the DSL provides a verbal update to all trustee meetings and that a written annual report is provided to the trustees by the DSLs
- 8.7. Ensuring that the effectiveness of the safeguarding arrangements is monitored on an ongoing basis and reviewed annually in line with the review of the policy and procedures
- 8.8. Ensuring that safeguarding roles and responsibilities are clearly defined, and that appropriate accountability is provided (see appendix A)
- 8.9. That a clear statement in relation to safeguarding is included in the annual Charity Commission submission
- 8.10. That any "Serious Incidents" (as defined in the Charity Commission Guidance - <https://www.gov.uk/guidance/how-to-report-a-serious-incident-in-your-charity>) are reported accurately and in a timely manner

9. Recruitment and ongoing support of staff and volunteers

The recruitment / appointment and support of staff and volunteers is of critical importance to Horsecastle Evangelical Church and to our work and ministry. To fulfil our legal duties and to ensure we meet the still higher standards dictated by scripture, all staff and volunteers will be subject to appropriate recruitment processes.

- 9.1. **Management of recruitment processes**

- 9.1.1. At least one person who is involved in the process of recruitment of staff or appointment of volunteers will be trained in Safer Recruitment
- 9.1.2. Roles that involve regulated activity and which consequently are subject to a DBS check will be clearly identified as exempt from the Rehabilitation of Offenders Act
- 9.1.3. Appropriate records will be kept of all recruitment processes and decisions
- 9.1.4. A "Single Central Record" of recruitment checks and a training log will be maintained

9.2. Recruitment process

- 9.2.1. Prior to appointment, all staff and volunteers will be required to submit an application form (see appendix D) including a self-declaration of fitness and suitability for the role (see appendix). Where necessary and appropriate (e.g., lack of literacy skills, English as a second language etc) support can be provided for completion of the forms.

Paid staff positions

- 9.2.2. Prior to appointment all paid staff will be required to attend a formal interview, regardless of whether a competitive process is in operation
- 9.2.3. Prior to appointment of staff, references will be sought, including, where possible, a reference from the current or previous employer
- 9.2.4. Upon commencement of their position, all staff will be required to complete a formal induction process as outlined in their role description and including any matters identified during the recruitment process
- 9.2.5. The Single Central Record, training Log and Personnel file will be updated as appropriate throughout the process

Volunteer positions

- 9.2.6. Prior to appointment, all volunteers will be required to attend a formal discussion to ensure their suitability and clarity of understanding of the role and its requirements
- 9.2.7. Prior to appointment, references will be sought. Where an appropriate reference was obtained at the time of application for formal church membership, this may be used, and internal references are acceptable
- 9.2.8. The Single Central Record, training Log and Personnel file will be updated as appropriate throughout the process

DBS Checks

- 9.2.9. Following appointment and prior to commencement of the role, staff and volunteers involved in regulated activity will be required to complete a DBS check
 - 9.2.9.1. Under normal circumstances, the individual will not commence their role until the result of the DBS check has been received
 - 9.2.9.2. Under exceptional circumstances and where it is necessary for the person to commence prior to receipt of the DBS check result, a formal risk assessment will be completed
 - 9.2.9.3. A formal agreement that outlines the duties that are permitted, and all measures implemented to prevent the individual having unsupervised access to vulnerable people will be drawn up and signed by the appointee and the DSL or the Safeguarding Trustee
- 9.2.10. Once formal notification of a clear DBS check has been received, the Single Central Record will be updated with the relevant information

Blemished DBS Checks

- 9.2.11. The applicant will be asked to present the DBS certificate to the DSL
 - 9.2.11.1. The applicant may, if they wish to, withdraw their application
 - 9.2.11.2. If the application is withdrawn, consideration should be given to whether this required the triggering of the “Management of ex-offenders or those who pose an actual or potential risk to others; particularly to vulnerable people” (*see section 13 of this policy*) process needs to be triggered
- 9.2.12. If the applicant self-declared the blemish and it has been discussed previously, the DSL will check to ensure that the detail provided in the self-disclosure is consistent with the information on the DBS certificate
- 9.2.13. If the applicant did not self-disclose, an open conversation about the circumstances of the blemish will be discussed with the applicant
- 9.2.14. Whether the discussion arises from self-disclosure or examination of the certificate, a formal assessment will be conducted to ascertain the applicant’s suitability for the role and the outcome will be recorded
 - 9.2.14.1. Advice can be sought from outside agencies if required
 - 9.2.14.2. The applicant will be given every opportunity to provide input to the assessment and the outcome will be explained to them
- 9.2.15. A blemished DBS check does not necessarily prevent the individual from engaging in regulated activity. The risk assessment may conclude:
 - 9.2.15.1. That the individual is unsuitable for the role
 - 9.2.15.2. That further investigation is required
 - 9.2.15.3. That the person is suitable for the role with restrictions
 - 9.2.15.4. That the blemish does not indicate unsuitability
- 9.2.16. If the risk assessment concludes that the individual is unsuitable for the role, consideration will be given to whether the “Management of ex-offenders or those who pose an actual or potential risk to others; particularly to vulnerable people” (*see section 13 of this policy*) process needs to be triggered
- 9.2.17. Once the details of the certificate have been recorded in the Single Central Record, the certificate will be returned to the applicant and no copies will be retained

Ongoing support and supervision

- 9.2.18. All staff and volunteers will receive proportionate supervision and pastoral care.
- 9.2.19. Where DBS checks are required, these will be updated at least every three years

Training

- 9.2.20. All staff and volunteers in roles that involve regulated activity or those who manage such staff will be required to attend regular safeguarding training
 - 9.2.20.1. Church Elders will refresh their training every three years
 - 9.2.20.2. Volunteers and staff involved in working with children, young people, or adults at risk of abuse are required to update their training at least every three years
 - 9.2.20.3. The Designated Safeguarding Lead and the Deputy DSL are required to attend formal update training at least every two years
 - 9.2.20.4. All staff, volunteers and trustees will undergo some informal update activity annually
- 9.2.21. A log of training and DBS checks will be maintained by the Safeguarding Administrator
- 9.2.22.

10. Ensuring a safe and healthy environment

Horsecastle Evangelical Church fully recognises that there are many factors that impact on and contribute to the safety of the environment for everyone; some of these being procedural and others cultural. Here we describe only the procedural aspects.

Health and Safety

- 10.1. The officers aim to ensure that the health and safety of everyone who enters our church community is protected by:
 - 10.1.1. Regularly reviewing our health and safety policy to maximise effectiveness and ensure ongoing legal compliance
 - 10.1.2. Maintaining and implementing proportionate Risk Assessments for both the premises and the activities of the church
 - 10.1.3. Maintenance and analysis of Accident and Incident Reports on receipt to ensure appropriate lessons are learned and timely responses are implemented and an overview analysis of reports that examines trends and recurring themes will be conducted at least annually
 - 10.1.4. Ensuring that adequate First Aid cover is available, and that only qualified First Aiders administer First Aid, except in emergency situations when instructed to do so by Emergency Services
 - 10.1.5. Ensuring that appropriate safety equipment such as First Aid kits, Fire Extinguishers etc are available and maintained on an ongoing basis
 - 10.1.6. Key Health and Safety information will be prominent and best practice will be promoted through announcements, effective signage etc

Awareness raising

- 10.2. *Horsecastle Evangelical Church recognises that any member of our church community could discover or receive a disclosure of abuse, and therefore all members need a basic awareness and competence, regardless of whether they engage directly in ministry to children, young people, or vulnerable adults. We will raise awareness by ensuring that:*
 - 10.2.1. Information about our policies , procedures and codes of conduct are publicly available and promoted by our leaders
 - 10.2.2. Details of our safeguarding team are prominently displayed
 - 10.2.3. We set clear expectations of conduct and that clear processes for identifying, challenging, investigating, and dealing with inappropriate conduct are implemented
 - 10.2.4. We implement and promoting clear and transparent processes for the raising of concerns or complaints, supported by a culture that encourages and welcomes these as opportunities to learn and improve

When engaging in ministry to children and / or young people we will:

- 10.3. Ensure that registers of children attending, and leaders present are maintained
- 10.4. Ensuring that those involved in such ministries have been appointed in accordance with our Safe Recruitment procedures
- 10.5. Ensure that consent is obtained for their attendance at the group and that contact details and information about any additional or specific needs are recorded
- 10.6. Ensure that appropriate child: adult ratios are maintained in line with guidance from the NSPCC (while onsite this ratio would apply to the number of leaders present within the building):

- ✓ 0 - 2 years - one adult to three children

- ✓ 2 - 3 years - one adult to four children
- ✓ 4 - 8 years - one adult to six children
- ✓ 9 - 12 years - one adult to eight children
- ✓ 13 - 18 years - one adult to ten children

- 10.7. Ensure that appropriate accident / incident reporting is in place and that any accidents or incidents are reported to parents / carers in a timely manner
- 10.8. Ensure that appropriate order and discipline are maintained
- 10.9. Ensure that children are encouraged and empowered to raise any concerns that they may have with leaders or their parents as appropriate

When children or young people are present at meetings that are primarily aimed at adults and childcare is not provided and their parents are present

- 10.10. During these times, children remain the responsibility of their parents who are responsible for their safety and care
- 10.11. Any concerns or support needs identified will be recorded and reported to the DSL in the usual way

When young people are present at meetings that are primarily aimed at adults and participating in that meeting in their own right

- 10.12. Although there are not specific procedures for such meetings, the normal principles of safeguarding will apply
- 10.13. If the young person is not believed to be competent to consent to attendance, consent will be sought from their parents / carers
- 10.14. If the young person is believed to be competent to consent to attendance, they will be encouraged to be open and transparent with their parents / carers and consent will be sought for the church to contact the parents and establish open communication and transparency
- 10.15. Leaders of the church or of the meeting in question will be vigilant to ensure that the young person is adequately protected
- 10.16. Any concerns or support needs identified will be recorded and reported to the DSL in the usual way

When ministering to Adults at Risk of Abuse or Adults with additional support needs

- 10.17. If the individual is not believed to be competent to consent to attendance, consent will be sought from their carers
- 10.18. If the individual is believed to be competent to consent to attendance, they will be encouraged to be open and transparent with their carers, and consent will be sought for the church to contact them with a view to establishing open communication and transparency
- 10.19. Leaders of the church or of the meeting in question will be vigilant to ensure that the individual is adequately protected
- 10.20. Any concerns or support needs identified will be recorded and reported to the DSL in the usual way

General provisions

- 10.21. The church will ensure that information relating to safeguarding, including contact details and other relevant information is prominently displayed in the building and online
- 10.22. Leaders will promote the need for every member to be vigilant to safeguarding concerns through the processes, teaching and culture of the church and by personal example

11. Responding to and reporting safeguarding concerns and disclosures

Managing immediate risk

- 11.1. Upon identification of a concern or receipt of a disclosure, the worker involved should make an assessment as to whether any immediate action is necessary to protect the individual
 - 11.1.1. The worker may seek advice from the team leader or from the DSL, however, the seeking of advice should not unnecessarily delay or prevent the protective action or place the individual at risk of further or increased harm
 - 11.1.2. In such urgent situations and if the DSL cannot be immediately contacted, the worker should contact either the police on 999 or Social Care to obtain support. Under such circumstances, the DSL should be notified at the earliest possible opportunity

Reporting concerns to the Designated Safeguarding Lead

- 11.2. Once it has been established that the individual is not, or is no longer in imminent danger, the concern will be reported to the DSL
 - 11.2.1. The concerns will be discussed with the DSL at the earliest opportunity, to ensure clarity of understanding
 - 11.2.2. Details of the concern must be recorded on the “Incidents and concerns reporting form” (See appendix C) either before, during, or immediately after the discussion with the DSL

Managing the risks: the role of the DSL

- 11.3. In discussion with the worker reporting the concern, the DSL will review any immediate actions taken and will be responsible for follow-up or further action that may be required
- 11.4. Upon receipt of the completed form, the DSL will establish a “Confidential File” in relation to the person at risk
 - 11.4.1. A Chronology (See appendix C) will be established and inserted at the front of the confidential file
 - 11.4.2. The confidential file will be updated with any further discussions or actions, including any advice sought or referrals made and updating will continue on an ongoing basis
 - 11.4.2.1. The DSL will confirm to the person raising the concern that the matter has been actioned. The DSL will not provide any unnecessary information. Information is only shared on a “need to know” basis
- 11.5. Where the concern meets the statutory threshold, the DSL will notify the parent or carer of the individual concerned (or the individual themselves if they are a competent adult) that a referral is being made to Social Care
 - 11.5.1. Information will not be shared with the parent / carer in situations where:
 - 11.5.1.1. To do so would place a child at increased risk of harm or neglect
 - 11.5.1.2. To do so would place an adult at increased risk of harm or abuse
 - 11.5.1.3. The concern relates to Fabricated or Induced Illness
 - 11.5.2. The referral will be made to the appropriate Social Care service
 - 11.5.3. If the referral has not been acknowledged within 3 working days, the DSL will follow up with Children’s Social Care
 - 11.5.4. The DSL will work with the Local Authority and other partners on behalf of the church to ensure that we fully participate in the safeguarding process
 - 11.5.5. All conversations, correspondence, and documentation etc will be placed into the confidential file and the “Record of action” and Chronology will be maintained on an ongoing basis
- 11.6. Confidential files will be stored in lockable storage within the Church building

- 11.7. The DSL will share information as necessary with other individuals in the church to facilitate effective safeguarding

12. Allegations against or concerns about staff and volunteers

Horsecastle Evangelical Church takes allegations against our staff and volunteers very seriously and will ensure that they are investigated thoroughly, via a transparent process that expedites the matter in a timely manner. We recognise that that we have a responsibility to take the allegation seriously, to manage the situation effectively while the investigation takes place and to and to support the person accused throughout the process.

- 12.1. Allegations against staff or volunteers within the church should be reported to the DSL
- 12.1.1. If the allegation is against the DSL, it should be reported the Elder with responsibility for safeguarding
- 12.2. Full details of the allegation will be recorded
- 12.3. The church's investigating officer will assess whether any immediate action is required to ensure the safety of everyone involved
- 12.3.1. Dependent upon circumstances and the immediate action required, notifying the individual that an allegation has been received may be unavoidable
- 12.3.2. If so, care will be taken not to compromise the gathering of evidence.
- 12.3.3. If it is necessary to notify the individual at this stage, details of the allegation will not be divulged
- 12.3.4. Support must be offered to the subject of the allegation as well as any potential victims
- 12.4. At the earliest opportunity, the LADO (Local Authority Designated Officer) should be consulted
- 12.4.1. If the LADO cannot be contacted due to working hours, initial advice can be sought from Christian Safeguarding Services (CSS)
- 12.5. If the allegation meets the threshold for LADO, the church's investigating officer will work with LADO to ensure that the allegation is thoroughly investigated, and all issues raised are addressed
- 12.6. If the allegation does not meet the threshold for LADO, the investigating officer will consult with CSS, who will provide independent support and advice to ensure transparency
- 12.7. Thorough records of all aspects of the handling of the allegation will be retained throughout the process.
- 12.7.1. These records will be held confidentially in lockable storage within the chapel
- 12.8. The DSL will seek and follow specialist advice throughout the process

13. Management of ex-offenders or those who pose an actual or potential risk to others; particularly to vulnerable people

As a church, we believe in the power of God to forgive and transform individuals. We also believe that every individual is valuable to God and should be protected; particularly those who are vulnerable.

- 13.1. Where the church becomes aware that an individual is an ex-offender or that they may pose a risk to vulnerable people, the church leaders will enter into an open and frank discourse with that individual to understand the context and the risks
- 13.2. With the consent of the individual (if required), the church will seek to work in partnership with probation services or other agencies supporting the individual where this is appropriate
- 13.3. The leaders will assess the risk posed by the individual and a formal risk assessment will be formulated
- 13.4. A formal agreement with the individual will be drawn up and will be signed by both the church leaders. The agreement will include:
- 13.4.1. The church's commitments to the individual who poses the risk

- 13.4.2. The steps the church will take to support the individual while simultaneously protecting everyone in the church community
- 13.4.3. The restrictions and conditions that will be applied to the individual’s involvement in the life of the church
- 13.4.4. The consequences of failure to comply with the agreement
- 13.4.5. When and how the risk assessment and formal contract will be reviewed
- 13.5. All decisions and agreements will be formally recorded and securely stored
- 13.6. The individual who poses a risk will be fully involved in the planning process and information will only be shared with church members by the leaders either:
 - 13.6.1. With the agreement of the individual who poses a risk
 - 13.6.2. Where information needs to be shared to protect vulnerable people and then, only the minimum information that is essential will be shared and the individual will be informed in advance what information will be shared
- 13.7. If the individual chooses to leave the church to avoid the management of the risk and starts to attend elsewhere, the church leaders will take specialist advice as to whether this information should be passed on

14. Concerns about practice

Horsecastle Evangelical Church strives to create an environment that is open, transparent, and accountable. We want to listen and respond well to any concerns raised by our staff and volunteers.

- 14.1. Staff and volunteers are encouraged to raise concerns about process, practice, or culture with the ministry team leader
 - 14.1.1. If they do not feel able to do so, or if they feel that concerns raised have not been given due consideration, they can be raised with the DSL or one of the Elders
- 14.2. The concerns will be carefully considered, and a formal response will be provided to the individual explaining the decision. The examination of the concerns raised may conclude:
 - 14.2.1. The concerns are wholly or partially valid and require corrective action
 - 14.2.2. That the concerns did not take account of all relevant factors, and no further action is required
 - 14.2.3. That the concerns were invalid and have been dismissed
- 14.3. If the complainant is not satisfied with the response, they should formally raise the matter with the Chair of Trustees, explaining their concerns about the adequacy of the initial response. Details of how this can be done will be communicated at the same time as the initial response
- 14.4. Once the Trustees have considered the matter, they will formally respond to the complainant in writing, explaining their findings and the rationale for their decision
 - 14.4.1. Details of how to raise the complaint externally will also be provided as part of the response
 - 14.4.2. This will include contacting the Charity Commission

Policy due for review:
July 2023

Policy last reviewed:
July 2022

Last review conducted / approved by:
Elaine Cruse

Horsecastle Evangelical Church

Safeguarding Statement

We want everyone who comes into contact with us to feel safe, valued and cared for. We believe that each person is made in the image of God, and as a result have an inherent dignity and worth.

We also recognise that we live in a sinful world, where human beings rebel against God and his ways for us, and harm one another in innumerable ways. We believe that the human heart is wicked and deceitful and that we are all capable of falling into sin.

We believe in the good news that God offers us forgiveness and new life if we will receive Jesus Christ as our saviour and Lord. We believe that when we submit to God and allow him to work in us by his Holy Spirit, we will grow in our faith and gradually become more like Jesus. Our greatest purpose and joy is to be in relationship with God, and to know his transforming work within us that gives us the power to change and become more Christlike; living lives that glorify God.

The church is a place where the love of God for each person is displayed and where we live, learn, and grow together in our faith. This involves supporting, encouraging, and even challenging and rebuking one another when we sin; all for the glory of God and for our individual and mutual good. We believe that God sees everything and that he knows even our secret and hidden sins and that one day each of us will stand before him as our judge.

As we journey and grow together in this life of faith, we recognise that we are not perfect and that at various times we will all have to both offer and seek forgiveness from others. We do, however recognise that within our church there is the opportunity for individuals or groups to harm, abuse, or exploit others. We as a church wish to stand against any misuse of power, abuse, or exploitation. We all have a responsibility to care for and protect each member of our church community, but particularly those who are weaker or more vulnerable.

If you have any concerns about the way that you, or anyone else has been treated, or about anything that we do as a church, please speak to one of the Elders or to one of our Designated Safeguarding Leads. You can find out who they are from the posters on the notice boards. Our safeguarding policy and procedures are available on our website.

As a church we take safeguarding seriously and we work with local and national organisation to help us to do all we can to keep everyone safe. We will fulfil all our legal duties to protect both children and Adults at Risk of Abuse, but we aim to go above and beyond and to discharge our safeguarding duties in a way that is biblically faithful and pleasing to our loving heavenly father, who calls us to do justice, love kindness and to walk humbly before him.

We commit to speaking to you openly and honestly if we have any concerns that you need to know about. If you have any concerns or require any support or help, please do not hesitate to speak to someone that you trust within the church.

Appendix B

Safeguarding responsibilities

Governance of safeguarding

The trustees will ensure that they provide leadership of safeguarding across the organisation by:

- Ensuring that legally compliant policies, procedures, codes of conduct and systems are implemented
- Ensuring that suitably skilled and knowledgeable Designated Safeguarding Officer Leads (one for children and one for vulnerable adults each acting as the others deputy) are appointed, supported, and resourced
- Providing accountability to those responsible for various aspects of safeguarding
- Reviewing the safeguarding arrangements to ensure that an effective and proportionate approach is thoroughly implemented and consistently enacted across the church
- Ensuring that the Designated Safeguarding Leads provide regular updates to the Trustees
- Ensuring that Charity commission requirements, including the responsibility to report any serious incidents are fully met

Leadership and management of safeguarding

The Designated Safeguarding Leads, will ensure that:

- The Safeguarding Policy is regularly reviewed, updated and any changes signed off by the trustees
- Safeguarding concerns are managed in a timely and proportionate manner, including making referrals to statutory agencies as required, working with partner agencies such as the Local Authority and the Police and the maintenance of accurate records and systems
- Leading the implementation of the safeguarding policies and procedures
- Ensuring that those engaged in ministry on behalf of Horsecastle Evangelical Church are provided with proportionate and appropriate training and that they are competent to discharge their safeguarding responsibilities
- Ensuring that regular reports are provided to the trustees and that any urgent issues are communicated to the Elder with safeguarding responsibilities in a timely manner
- Raising awareness of safeguarding and promoting its importance across the organisation

Individual responsibilities

Everyone working on behalf of Horsecastle Evangelical Church is required to:

- Act in accordance with the policies, procedures and codes of conduct provided
- Adhere to local legislation, guidance, and procedures
- Ensure that they remain vigilant to the risks of harm to

Appendix C
Standard Document Samples

	Application to volunteer
	Concerns reporting form
	Confidential file chronology
	Confidential file record of conversations and actions
	Youth consent form
	Camp consent form
	Template Annual Report from DSLs to trustees

Horsecastle Evangelical Church

Volunteer application form

About You		
Full name	Address	
Phone number		
Mobile number		
E-mail address		
About the role		
Department /Group / ministry area	Role applied for	
Is the role subject to a DBS check?		
Children only	Adults only	Children and adults
Personal statement		
Please briefly describe your reasons for applying for this role and any appropriate experience in similar roles.		
Do you have any questions or concerns about the role, or your ability to fulfil it, that you would like to discuss with us?		

Please supply details of 2 people who can comment on your suitability for this role.		
Reference 1	Reference 2	
Name	Name	
Relationship to you or capacity in which you are known to them	Relationship to you or capacity in which you are known to them	
Address	Address	
Phone	Phone	
E-mail address	E-mail address	
Self-declaration		
	Yes	No
Do you have any criminal convictions that would affect your ability to perform this role?		
Is your state of physical, mental, emotional, and spiritual health adequate to fulfil this role?		
If the role involves working with children, young people, or vulnerable adults, are you, or have you ever been barred from such work?		
Are you in agreement with the church's beliefs as outlined in the statement of faith?		
Do you agree to abide by the policies, procedures, codes of conduct, risk assessments etc that are relevant to this role?		
Is there anything that you wish to add or that you wish us to consider in relation to this self-declaration?		
I confirm that the information supplied in this form is accurate to the best of my knowledge.		
Signature:		
Date:		
For office use only: Form reference / volunteer reference as per Single Central Record.		

Horsecastle Evangelical Church

Incident / concern reporting form

About this form and the person completing it			
Your name	Your phone number	Your mobile number	Your e-mail address
Are you reporting: <i>Please tick the appropriate box(es)</i>	An incident	A disclosure	A concern
Department /Group / ministry area			Date completed
About the person or people, we are concerned about or involved in the incident			
Their name(s)	Their Address and contact details	Their Date of birth	Name & contact details for parent (where appropriate)
<i>Please insert more lines as required</i>			
Details of the incident / disclosure / concern			
<i>What happened / was said / have you noticed etc?</i>			
Context of the incident / disclosure / concern			
<i>Where / when / who else was present etc.</i>			

Date of incident / disclosure	Time of incident / disclosure
Action taken to ensure immediate safety	
Other action taken or advice sought	
Signature	
For office use only: Form reference –	

Please attach any notes made at the time to this form. Do not destroy any original copies of notes.

Horsecastle Evangelical Church

Record of safeguarding conversations and actions

Date of action / conversation	Document reference
Description of record	
Information given	
Advice received	
Actions to take	
Outcomes	
Recorded by	Date recorded

**Horsecastle Evangelical Church
Consent form**

Contact details

Child's name _____ Date of birth _____ Address _____

_____ Phone
number _____ Additional number for emergencies _____ Email address

Medical details

Name & address of GP _____

_____ GP phone number _____

If your child is undergoing regular medical treatment or has any medical conditions (e.g. asthma) which may affect their ability to take part in some activities or which medical practitioners would need to know in an emergency, please give details below including medications currently being taken. Please note that we are unable to administer medication to your child unless you complete a separate medication consent form – please ask us for one if appropriate.

_____ Please continue overleaf if necessary Date of last
tetanus immunisation _____ Any known allergies (food,
medicine, other) or dietary needs _____

_____ Please continue overleaf if necessary

We occasionally take photographs for display and promotional use. Are you happy for your child to appear in these? Yes/no

Declaration

If it becomes necessary for my child to receive emergency medical treatment or dental treatment and I cannot be contacted I give my general consent to any treatment advised by the medical and/or dental authorities as being necessary and authorise the group leaders to sign any document required.

I have ensured that my child understands that it is important that any instructions given by the leaders are followed & I understand that the group leaders reserve the right to call me to collect my child if necessary.

Signed (parent/guardian) _____ Date _____ Name (please
print) _____ This form will be kept in a

confidential place and we will only release the information on it where necessary.

Camp Consent Form

To be returned by _____

I give consent for my child _____ to attend the camp

at _____ from _____. I have read

the itinerary for the weekend and am happy for my child to take part in all the activities. I confirm that I am happy for my child to swim under supervision.

My child can/cannot swim 50 metres and tread water (*please delete as appropriate*)

I have previously completed a Youth Work Consent Form for my child and confirm that none of the details, including the medical information, have changed (*please ask a leader for a new form if this is not the case*)

Medication currently being taken and details of when it needs to be taken and at what dose:

I give permission for _____ (Leader) to administer the above medication to my child. (*Unless you tell us otherwise, we will be leaving your child to administer their own inhaler.*)

Please list any special dietary requirements your child has: _____

My emergency contact details for the duration of the weekend will be as follows:

FIRST CONTACT _____

SECOND CONTACT _____

I confirm that I will be collecting my child from the Chapel on Sunday afternoon / I am happy for my child to make their own way home (*please delete as appropriate*)

I enclose a cheque (made payable to Horsecastle Evangelical Church) / cash in the sum of _____

Signed _____ PARENT / GUARDIAN Name (please

print) _____

Horsecastle Evangelical Church

Annual safeguarding report to the trustees

Report from the Designated Safeguarding Leads covering the period from	
Report completed by:	Date
Summary of safeguarding activity	
Number of concern / incident reports received in relation to children	
Number of concern / incident reports received in relation to adults	
Number of cases referred to Children's Social Care	
Number of cases referred to Adult Social Care	
Number of allegations received	
Number of allegations investigated by Local Authority	
Number of reportable incidents reported to charity commission	
Were there any common themes or issues in the reports submitted?	Yes / No
If so, what?	
Do you have any concerns about the effectiveness of the safeguarding arrangements that are in place?	Yes / No
If so, what?	
What training or informal update activity been completed this year?	
Any recommendations to or requests of the trustees?	

Declaration from Safeguarding Leads	Yes	No
Has the policy been reviewed for legal compliance and effectiveness? <i>(CSS can be consulted to check whether any significant changes have occurred)</i>		
Are DBS checks up to date for all staff and volunteers?		
Is the Single Central Record up to date?		
Is staff and volunteer training up to date?		
Is DSL training up to date?		
Is the training log up to date?		
Any other comments		

Appendix D
Codes of Conduct

Code of conduct for staff and volunteers working with children or young people

Those working with children and young people will

- Ensure that they understand the policies, procedures, systems, guidelines, and risk assessments etc that are provided and that they are implemented
- Attend safeguarding training on the frequency stipulated in this policy
- Work in a transparent and responsible manner that ensures that they are accountable to the church leaders and that they are open to discussion with and challenge from parents
- Ensure that their conduct embraces their responsibility for the safety of the children in their care
- Maintain a state of vigilance to identify and report any safeguarding concerns, including concerns about adults who may pose a risk to children
- Refrain from any abuse of their power or authority as adults and leaders within the group
- Only take responsibility for children if they are physically and mentally fit and able to do so
- Treat them with respect and dignity
- Treat them in an age-appropriate way that recognises their developmental stage and ability
- Provide them with appropriate levels of choice
- Treat them as individuals
- Respect their views and wishes
- Promote and ensure appropriate behaviour towards one-another
- Ensure that appropriate professional boundaries are maintained
- Ensure that age-appropriate boundaries are clearly explained and consistently implemented in accordance with this policy
- Ensure that any age-appropriate physical contact is child led
- Ensure that physical intervention is only used as a last resort to ensure the safety of an individual child or the group
- Refrain from any physical chastisement
- Refrain from making any social media connections with them
- Will not engage in any sexualised, aggressive, humiliating, demeaning or discriminatory (etc) language or behaviour with them
- Act with fairness and treat children equitably, avoiding discrimination or favouritism
- Seek to avoid any language or behaviour or adopting any attitude that could lead to misunderstanding

Code of conduct for staff and volunteers working with vulnerable adults

Those working with vulnerable adults including adults at risk of abuse will:

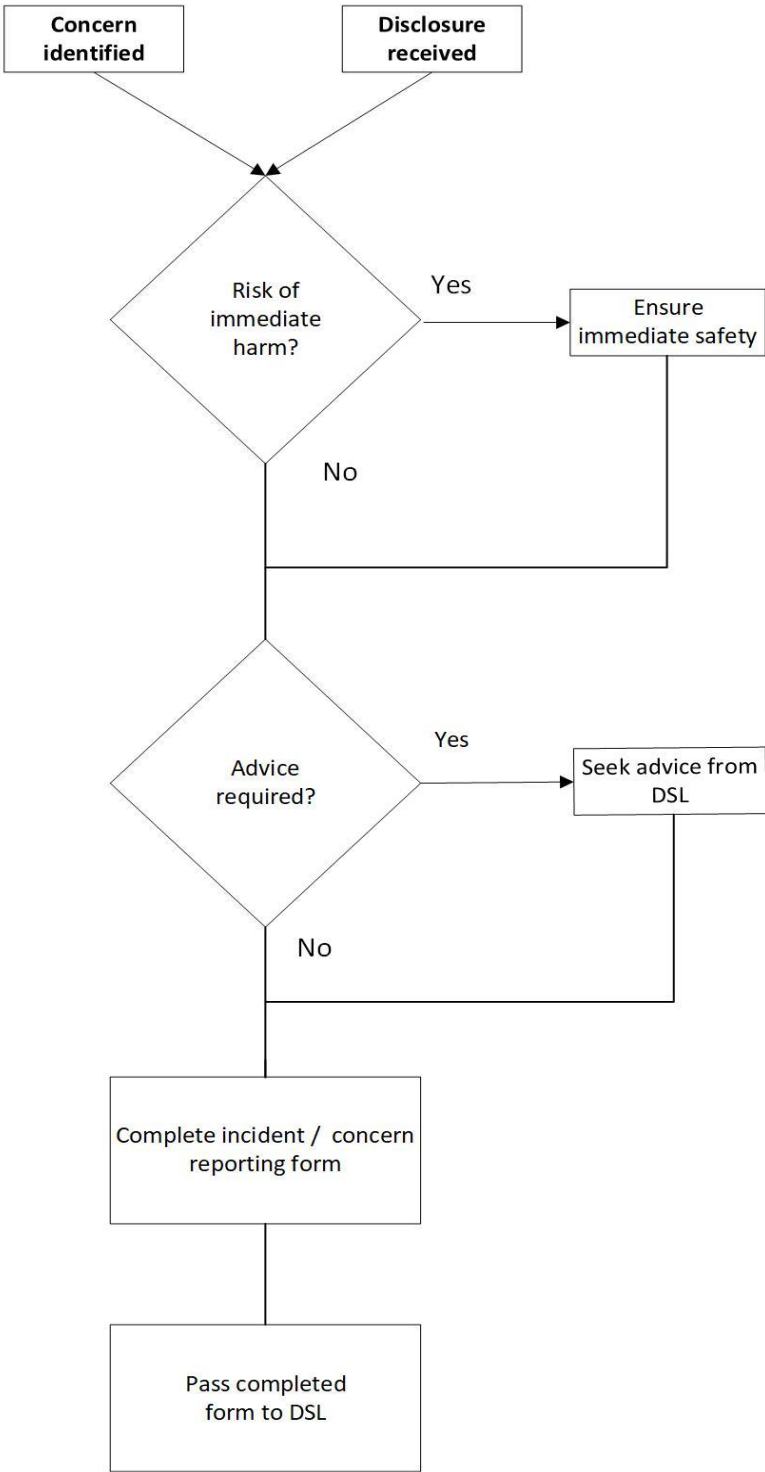
- Ensure that they understand the policies, procedures, systems, guidelines, and risk assessments etc that are provided and that they are implemented
- Attend safeguarding training on the frequency stipulated in this policy
- Work in a transparent and responsible manner that ensures that they are accountable to the church leaders and that they are open to discussion with and challenge
- Ensure that their conduct embraces their responsibility for the safety of those with whom they are working
- Maintain a state of vigilance to identify and report any safeguarding concerns, including concerns about people who may pose a risk to them
- Refrain from any abuse of their power or position and will always seek to act in the best interest of the individual
- Only engage in activity for which they are physically and mentally fit
- Treat them with respect and dignity
- Ensure that support is client led and that their views, wishes, and choices are respected
- Treat them as individuals
- Promote and seek to ensure appropriate behaviour towards one-another
- Ensure that appropriate professional boundaries are maintained
- If working in groups, seek to ensure that necessary behavioural and interpersonal boundaries are clearly explained and consistently implemented
- Ensure that any physical contact is client led
- Ensure that proportionate physical intervention is only used as a last resort to ensure the safety of an individual or the group
- Will not engage in any sexualised, aggressive, humiliating, demeaning or discriminatory (etc) language or behaviour with them
- Act with fairness and treat each person equitably, avoiding discrimination or favouritism
- Seek to avoid any language or behaviour or adopting any attitude that could lead to misunderstanding

Code of conduct for staff and volunteers providing pastoral care

Those involved in providing pastoral care will:

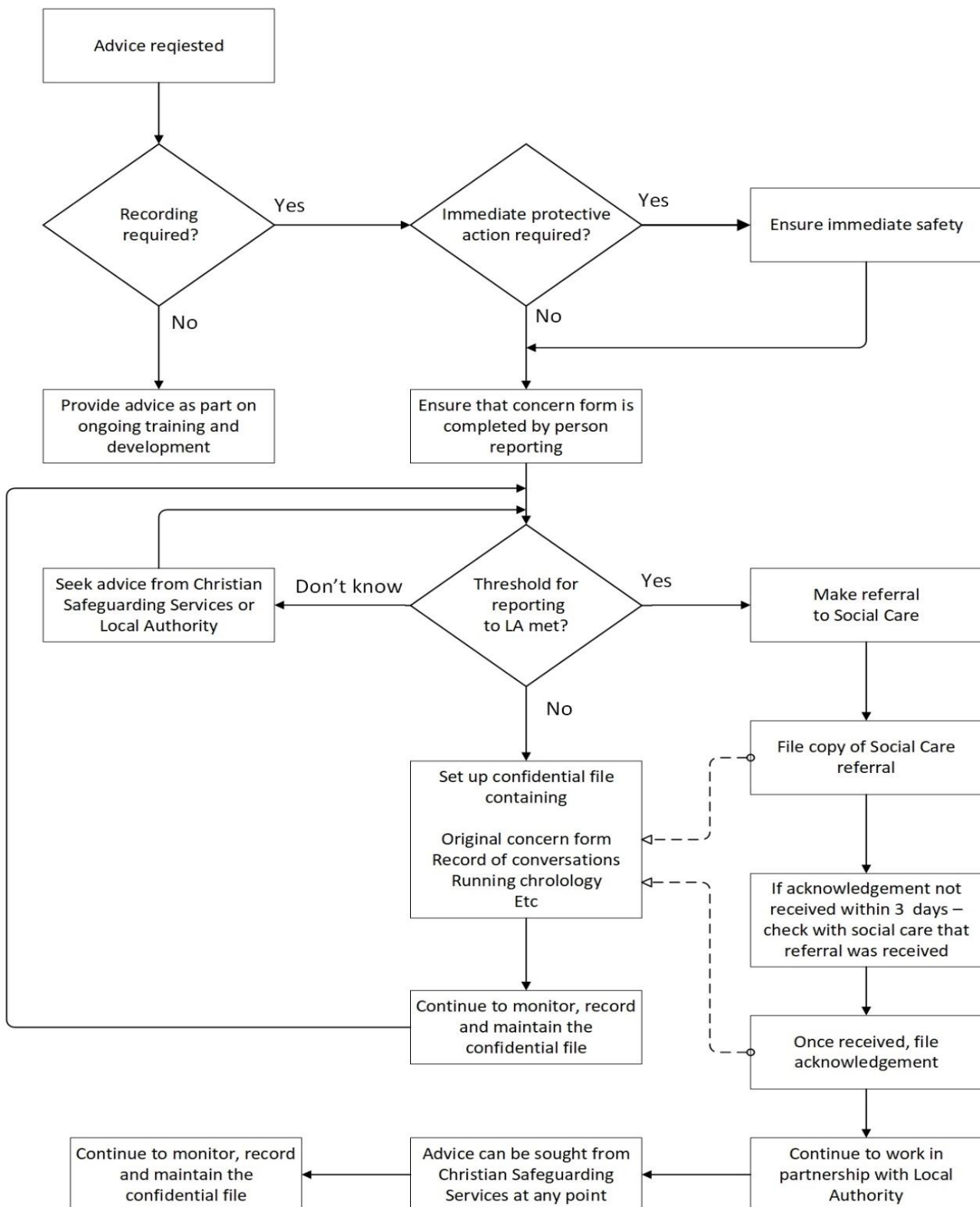
- Ensure that support provided is led by the person receiving the support
- Ensure that the dignity and wishes of the individual are always respected
- When delivering challenge or difficult messages, will do so in a respectful, compassionate, and gentle way that is in line with their best interests (including their emotional and spiritual wellbeing)
- Will seek to ensure that the individual's right to question or ignore any advice or suggestions is fully understood
- Attend safeguarding training on the frequency stipulated in this policy
- Work in a transparent and responsible manner that ensures that they are accountable to the church leaders and that they are open to discussion with and challenge
- Maintain a state of vigilance to identify and report any safeguarding concerns, including concerns about people who may pose a risk to them
- Refrain from any abuse of their power or position and will always seek to act in the best interest of the individual
- Only engage in activity for which they are physically and mentally fit
- Ensure that appropriate professional boundaries are maintained
- Ensure that any physical contact is client led
- Ensure that proportionate physical intervention is only used as a last resort to ensure the safety of an individual or the group
- Will not engage in any sexualised, aggressive, humiliating, demeaning or discriminatory (etc) language or behaviour with them
- Act with fairness and treat each person equitably, avoiding discrimination or favouritism
- Seek to avoid any language or behaviour or adopting any attitude that could lead to misunderstanding

Reporting concerns or disclosures



**Christian Safeguarding Services can be contacted for advice at any point in the process
Phone 07960 751778 or e-mail advice@thecss.co.uk**

Processing concerns or disclosures: the role of the DSL



Christian Safeguarding Services can be contacted for advice at any point in the process
Phone 07960 751778 or e-mail advice@thecss.co.uk

Safeguarding Information

Safeguarding everyone at our church is a priority for us.

It's an outworking of our Biblical Principles.

Church Name: (insert Church name/logo here)

Charity Number:

Our Safeguarding Coordinator is:

Name : insert name here

Contact Details: insert details here

Insert photo here

Our Deputy Safeguarding Coordinator is:

Name: insert name here

Contact Details: insert details here

Insert photo here

In an emergency call your local authority's

Children's Services: insert phone number here

Adults' Services: insert phone number here

or the Police

Christian Safeguarding Services' Advice Line:

0116 218 4420

available 7 days a week between 7am and 10pm

Website: www.thecss.co.uk

